

# NASCAR Rear View

The top twelve drivers are locked in and qualified for the next ten Chase races.

By Melissa Gaona  
Statesman Sports

Jimmie Johnson's victory at Richmond International Raceway concludes the race to the chase. Twelve drivers have earned their spot and they're all aiming for the same common goal; to win the Sprint Cup Championship.

Originally, Richmond's race was set for Saturday night. That was before Tropical Storm Hanna delayed the race until Sunday afternoon, September 7.

This is Johnson's second back-to-back win this season, his third total win this season and his third consecutive win at Richmond International Raceway; Johnson won both races at Richmond last year.

Eagerness was definitely evident on the track Sunday afternoon. Back in May, Dale Earnhardt Jr. was leading the race at Richmond with only about two laps left to finish the race, when Kyle Busch spun him out. Well, the fans stood in the stands Sunday afternoon, on lap 213, when Jr. unintentionally spun out Busch. Some call it payback, some call it hard racing.

Tony Stewart barely got by the spinning #18 car, to finish second in the race. It was on lap 388 that Stewart began to stalk Johnson for pretty much the rest of the race. Stewart has not won one race this season. Johnson finally caught a good and final lead with only 9 laps left to the checkered flag.

Next week we'll start the Sprint Cup series with the Sylvania 300, at New Hampshire Motor Speedway, Sunday, September 14, aired at 1p.m. on ABC. Denny Hamlin and Clint Bowyer won the races at New Hampshire in 2007.

Now it's time to witness, over the last/next ten races, who's hungry enough to take it to the top and win the 2008 Sprint Cup Championship.

### Richmond International Raceway Poll Results

- 1). Jimmie Johnson
- 2). Tony Stewart
- 3). Denny Hamlin
- 4). Dale Earnhardt Jr.
- 5). Mark Martin
- 6). Jeff Burton
- 7). Kevin Harvick
- 8). Jeff Gordon
- 9). David Reutimann
- 10). Kurt Busch

### Current Point Standings in the Chase to the Sprint Cup

1). Kyle Busch	5080
2). Carl Edwards	5050
3). Jimmie Johnson	5040
4). Dale Earnhardt Jr.	5010
5). Clint Bowyer	5010
6). Denny Hamlin	5010
7). Jeff Burton	5010
8). Tony Stewart	5000
9). Greg Biffle	5000
10). Jeff Gordon	5000
11). Kevin Harvick	5000
12). Matt Kenseth	5000

## ★ Bears

(Continued from page 1)

interception on Frankston's 40-yard line with only 33 seconds left to play in the half. Bailey scored his second touchdown, from the 1-yard line, with only 9 seconds left on the clock. Smith missed his first field goal attempt of the game and the Bears ended the first half 41-6.

A scoreless third quarter kept the score Bears 41-Indians 6.

In the fourth quarter Jon Jon Thompson scored for the Bears when he ran for a 7-yard touchdown. Smith kicked for the sixth extra point and put the finishing touch on the scoreboard for the Bears. The Indians came back to score their final touchdown and missed the field goal once again.

The final score Bears vs. Indians 48-12.

The Bears scored 44 points against Kemp and 48 points against Frankston. Can the Bears bring these high scores to the field against Spring Hill Panthers?

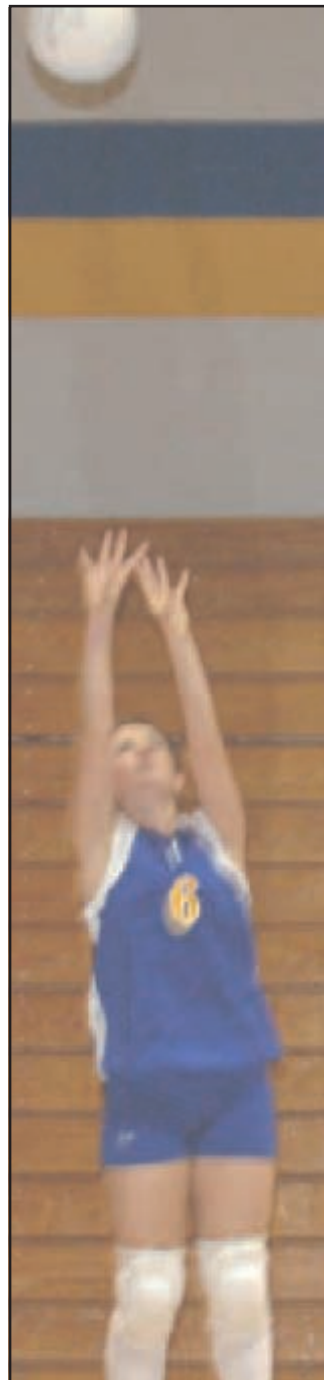
With Jared Bray and O.T. Moore sacking quarterbacks, T. Warren running for a 100-yard touchdown, Charlie Stringer and Tyler Rogers making interceptions, two successful quarterbacks and Smith delivering outstanding kicks (this is just to name a few), it is evident that the Bears have the potential to do so.

The Brownsboro Bears will host the Spring Hill Panthers at the Bears Stadium, Friday, September 12, at 7:30 p.m.



The Bears are 2-0 in regular play for the 2008 season with a 44-12 win over Kemp and the win over Frankston.



TEAM SPIRIT - The Bearettes during the Brook Hill game.



Bearette # 6 Chelsea Chambers sets the ball during the Brook Hill Booster Tourney.

The place to hang out after you have cheered the Brownsboro Bears to victory on Friday Night!  
STOP BY AFTER THE GAME - 10-12pm

Panini's Movies Sandwiches

**EVERYTHING 1/2 OFF**

**Stone Brothers Coffee**  
Hwy 31E - Chandler - 903-849-5000

Hank Rogers  
for  
COUNTY COMMISSIONER PRECINCT 3  
**Democrat**

Together We Can Make a Difference"

(903) 675-4344 Home  
(903) 288-9462 Cell

Pol. Adv. Pd. for by Melody Rogers, Treasurer, P.O. Box 804, Athens, TX

**MADDOX**  
air conditioning, inc.

"Serving East Texas Since 1937"

Call: 903-592-6531 or  
**1-800-256-MADX (6239)**

Tom Maddox License # TACLA003795C


**Need Extra Copies?**  
The Statesman

Sold weekly at the following locations:

Y's Hometown Foods  
Food Fast - Brownsboro  
Piggy's Too - Brownsboro  
Super Food #7 - Chandler  
Brookshires - Chandler  
Debbie & Tracie's Hair Salon  
Copeland's Chandler Drug  
Superfood #37 - Chandler  
Presley's Place - Chandler  
Superfood #27 - Murchison  
Beans & Burgers - Murchison  
The Shed - Edom  
Edom Bakery & Grill

Visit us on the web at  
[www.c-bstatesman.com](http://www.c-bstatesman.com)

**Brownsboro Junior High School**  
**STUDENTS OF THE WEEK**




**Brittany Baranyer**  
8th Grade

Parents:  
Charlene and Lloyd Riggs

Brothers/Sisters:  
Courtney Barganyer

Hobbies:  
Loves to play outside



**George Black**  
7th Grade

Parents:  
George Black  
Brothers/Sisters:  
Two brothers, two sisters

Hobbies: I like to play football and I like to fish.



## ETMC EMS Membership:

# Rescue from costly ambulance bills.

Special Limited Offer

As little as

# \$60\*

per year

could save you hundreds in ambulance transports

**Don't Delay!**  
Membership deadline is Sept. 30

Membership year is Oct. 1 through Sept. 30.

To sign up for ETMC EMS membership or for more information, visit [www.etmc.org](http://www.etmc.org) or call toll-free

**1-800-642-JOIN (5646)**



East Texas Medical Center  
Regional Healthcare System

**The average ambulance transport costs \$640.**

And most insurance, including Medicare, will not cover the full amount of an ambulance bill. Membership in the ETMC EMS program protects you from costly out-of-pocket expenses because it prepays any portion of the ambulance charges not covered by insurance or Medicare.

\*\$60 fee for a new membership with insurance.  
\$68 fee for new or renewed membership without health insurance.

ETMC EMS Ambulance Membership benefits include:

- Full coverage of billed emergency transport charges for members with health insurance.
- 40 percent coverage of billed emergency transport charges for members without health insurance.
- Coverage of the portion of the bill not reimbursed by insurance for medically necessary non-emergency transportation to or from a hospital or nursing home.
- Access to ETMC EMS ambulance and Air 1 emergency helicopter within the shared service area.
- Coverage for all qualified members of your household.

ETMC EMS thanks you for supporting your community's access to 24-hour ambulance care through your membership.

A not-for-profit organization committed to improving the quality of life in East Texas communities.

[www.etmc.org](http://www.etmc.org)